

# LOGISTICS & DISTRIBUTION INDUSTRIES

Logistics and distribution industries are an important part of Greater Manchester's economy, with 3,335 business employing 60,400 people. Many of these businesses are very small however there are some national and global companies right here in Greater Manchester...

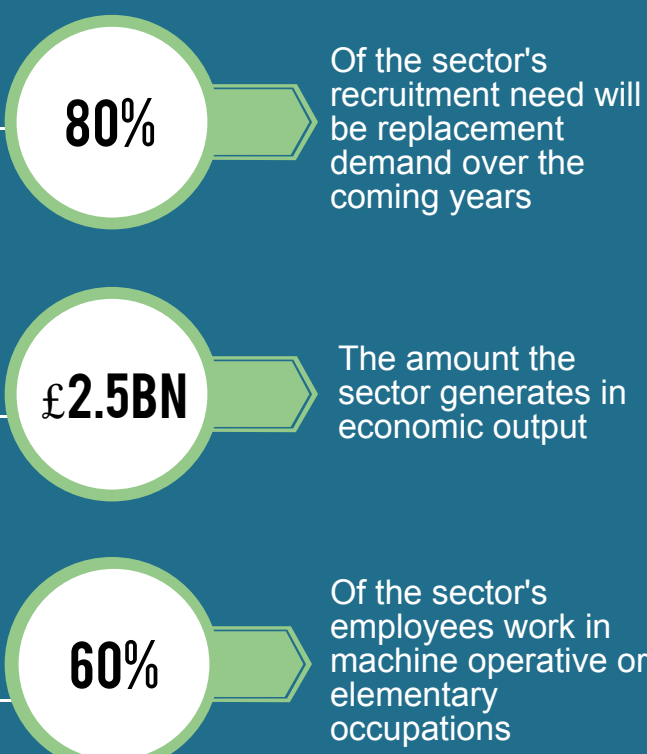


## Labour Market Information

Logistics and distribution is an important part of GM's economy, as a business sector in its own right and as an enabler of success of other businesses.

The industry has changed radically in the last five years, with next-day and same-day delivery becoming increasingly in demand.

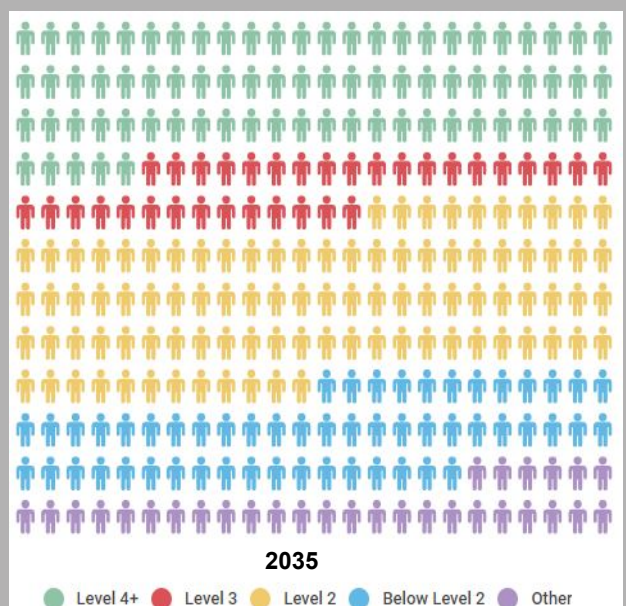
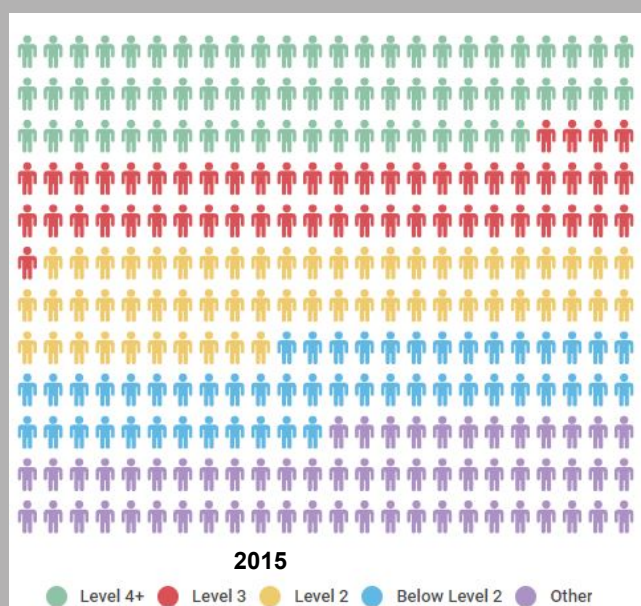
Major employment sub-sectors in the industry include land transport; warehousing and postal & courier services.



## Skills

Skills across the logistics and distribution industries are wide ranging, with fork-lift truck driving, manual handling and driver certificate of professional competence (CPC) being particularly valued. New skill requirements are expected to arise from environmental policies, the introduction of electric vehicles and better use of delivery capacity.

The images below show the expected change in skill levels within the industry, from 2015 to 2035:



## Key Challenges

### Land

Ensuring availability of employment land supply - connected to strategic road networks to meet logistics growth

### Transport

Ensuring the transport infrastructure takes advantage of the connection to the Liverpool Superport and opportunities for port related freight

### Perceptions

The sector has struggled to develop a positive image amongst young people and especially women; leading to an ageing, male-dominated workforce that will soon start retiring

### Skills

Technology and ICT skills will be in more demand due to industrial digitization; this will be reflected in the types of skills needed by employers in the sector